



BUSINESS CHOICE



ADRIAN STEEL®

Cargo Management Solutions for Commercial Vehicles

Commercial Vehicle Packages



2011

A

Commercial Van Packages

Featuring ADseries adjustable shelving:



Full Size Vans No Charge Commercial Bin Package

No Charge!

MSRP \$2327

Note: Specify 135" or 155" WB when ordering.
Vans with auxiliary rear heat require an extra cost of \$57.



Full Size Vans General Service Package

\$475 Co-Pay

MSRP \$3115

Note: Specify 135" or 155" WB when ordering.
Vans with auxiliary rear heat require an extra cost of \$57.



Full Size Vans Electric & Gas Appliance Repair Package

\$855 Co-Pay

MSRP \$3585

Note: Specify 135" or 155" WB when ordering.
Vans with auxiliary rear heat require an extra cost of \$57.



Full Size Vans Heating & A/C Repair Package

\$1125 Co-Pay

MSRP \$3953

Note: Specify 135" or 155" WB when ordering.
Vans with auxiliary rear heat require an extra cost of \$57.



Commercial Van Packages

Options for Access/Pro and Left Hand Door Vans:



Full Size Vans Industrial Ladder Rack Package

No Charge!

MSRP \$1672



Full Size Vans Poly Protecto-Van Liner

135" WB \$415 Co-Pay
MSRP \$2107

155" WB \$700 Co-Pay
MSRP \$2583

Left Hand Door \$415 Co-Pay
MSRP \$2020



Note: Liner not available on vans with auxiliary rear heat.

Left Hand Door - Full Size Vans Commercial Bin Package

No Charge!

MSRP \$2439

Note: Vans with auxiliary rear heat require an extra cost of \$57.



Access/Pro - Full Size Vans Commercial Bin Package

No Charge!

MSRP \$2439



Note: When purchasing a 2010 or 2011 Access/Pro Van from dealer inventory, the Commercial Bin Package will more than likely already be installed.



A

Commercial Pickup Packages

Tool boxes and racks organize truck beds:



Full-Size Pickups
Double-Lid Crossbox & Side Boxes **\$365 Co-Pay**

MSRP \$1667



Full-Size Pickups
Single-Lid Crossbox & Side Boxes **\$365 Co-Pay**

MSRP \$1667



Full-Size Pickups
Double-Lid Crossbox & Ladder Rack **\$385 Co-Pay**

MSRP \$1641



Full-Size Pickups
Single-Lid Crossbox & Ladder Rack **\$385 Co-Pay**

MSRP \$1641



Full-Size Pickups
Jumbo 18" Deep Double-Lid Crossbox **No Charge!**

MSRP \$705



Full-Size Pickups
Jumbo 18" Deep Single-Lid Crossbox **No Charge!**

MSRP \$705



Mid-Size Pickups
Double-Lid Crossbox **No Charge!**

MSRP \$746



Mid-Size Pickups
Single-Lid Crossbox **No Charge!**

MSRP \$746

B

Upfit Equipment Cash

More options for trade specific equipment:



Option B - Full Size Van

Receive up to \$1000 toward your eligible Full Size Van when you install a comparable amount of eligible upfit equipment. Choose from a variety of vocational packages or custom design an interior to your specific business needs. Locksmith, Auto Glass Repair, Alarm, Telecommunications, Electric and Gas Repair are just a few of the vocational packages available through Adrian Steel. Floor Drawers, Lockers, Tank Cabinets, Reel Holders and Files provide even more specialized storage. Cargo and Ladder Racks transport ladders, sheet goods, lumber, conduit and more securely on the roof of your van.



Option B - HHR Panel

Spend \$500 to receive \$500 toward eligible upfits on your HHR. Add a steel partition to keep your cargo safely behind you. A slide-out tray can be installed on the floor, so your cargo can be rolled out for easy access. A variety of small parts drawers and trays can be added to the slide-out for even more storage options. Grip-Lock Ladder Racks and Perimeter Cargo Racks are also available for all your cargo carrying needs.



SLDHHR Cargo Slide-Out and 61-HHR Grip-Lock Ladder Rack



P2HHR - HHR Steel Cargo Partition and SLDHHR Cargo Slide-Out Tray with two 919 drawers and a 4A parts tray (right.)



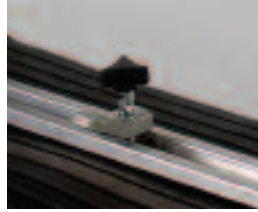
VPHHR - HHR Aluminum Perimeter Rack

Upgrade Your Package

Add accessories to fit your business needs:



LoadsRite Drop-Down Ladder Rack



Tie Down Kit



LK8 Ladder Keeper



TA1 Hook Bar



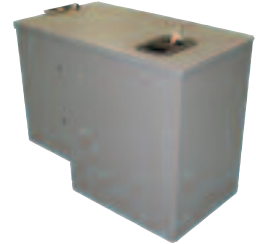
ADseries Dividers



2BRS Steel Utility Rack



919 Three Drawer Combo



DDF12 Driver Data File



Door Kits



63-1 Grip-Lock Double Ladder Rack



2011 GM BUSINESS CHOICE PROGRAM REQUIREMENTS

The 2011 GM Business Choice program is valid from October 1, 2010 to September 30, 2011. You must purchase or lease your vehicle during the program period and provide proof of your business. Vehicle must be used in the day-to-day operation of the business and not solely for transportation purposes. This program may not be compatible with other offers or incentive programs. Consult with your Chevrolet or GMC dealer for program compatibility and other restrictions. For complete program requirements, including information regarding offers, vehicles, equipment, options, warranties and ordering information, consult your Chevrolet or GMC dealer or visit www.gmbusinesschoice.com.

GM, the GM Logo, Chevrolet and the Chevrolet logo, GMC and the GMC logo, and the slogans, emblems, vehicle model names, vehicle body designs and other marks appearing in this catalog are the trademarks and/or service marks of General Motors, its subsidiaries, affiliates or licensors. ©2011 General Motors. Eligible vehicles, equipment, tools and accessories may differ slightly from versions shown.

www.gmfleet.com

www.chevrolet.com

www.gmc.com

Distributed by:

WWW.ADRIANSTEEL.COM